

Accredited by the  
**BRITISH COUNCIL**  
for the teaching  
of English in the UK

 Quality  
English

  
International Association  
of Language Centres

**ENGLISH  
UK**



Welcome to our school



# Welcome to Southbourne School of English

---

Since my grandfather founded the school in 1966, we've helped hundreds of thousands of students from around the world make real progress with their English.

From the moment a student books a course, we do everything we can to help make their time studying with us smooth and enjoyable. Our experienced staff are here to assist every step of the way, from helping students develop their English in a class best suited to their level, to finding the best homestay accommodation for their needs, as well as everything else in between – we are here to give students the best and most memorable study abroad experience!

We believe our students benefit from learning in a friendly, safe learning environment, and with our dedicated team, we make that possible time and time again!

I hope to welcome you to our school in the near future.

**Paul Gallina**  
Managing Director



*Phallia*



## Contents

Welcome to our school	1
Student testimonials	2
Southbourne	3
Bournemouth	4
About our school	5
Our facilities	6
Adult courses	7
Junior courses	9
Timetables	11
Homestay map	13
Accommodation and welfare	14
Travelling to our school	15
Map of airports	16
Timeline of our school	17
School history	18
How to book your course	Back



*"I want to thank the school for all the dedication and for making me feel at home."*

Nicolas, Colombia



*"I am grateful for the lovely friendships that I have developed with people from all over the world."*

Simona, Switzerland



*"Southbourne English School is very good. The teachers are very experienced and friendly."*

Canev, Turkey



*"I am happy with all the people I was able to meet, they made my stay wonderful and unforgettable."*

Mateo, Argentina



*"I believe that what makes an experience unforgettable is that special moment when you realise that a new place feels like home..."*

Riccardo, Italy



*"The teachers are perfect and the school staff are very kind."*

Kino, Japan

## Southbourne

**Southbourne is a vibrant, thriving coastal suburb of Bournemouth which has plenty to offer people of all ages.**

Whether you're looking to visit award-winning eateries that include a Michelin star restaurant, take a relaxing stroll on the golden sands of our Blue Flag beach, or explore the unique selection of independent cafés and boutique-style shops on our high street, Southbourne alone can provide you with endless entertainment during your study abroad experience!

Southbourne, also known as "SoBo", is home to a tight-knit and friendly community of locals that make our students feel right at home!

Southbourne is approximately 5km (or 3.1 miles!) east of Bournemouth's town centre. Bournemouth is a very popular destination for international students – welcoming around 50,000 every year!

Visit [southbourneschool.co.uk/gallery/](https://southbourneschool.co.uk/gallery/) for more photos of our school and our beautiful local area!



**Southbourne high street**



**Students playing volleyball at beach**

 **5**  
minute walk  
from school to  
high street

 **15**  
minute walk  
from school  
to beach

**Southbourne beach**

← **5k**

Scan for more photos  
of Southbourne



## Similar to Southbourne, when the sun shines, Bournemouth shines too!

Bournemouth has a wealth of attractions, history, and experiences, including 7 miles of stunning sandy beaches, museums, galleries, amusement arcades, a climbing centre, a world-first pier-to-shore zip line, mini-golf, and even an oceanarium!

If you're thinking about learning English in the UK and you are interested in football, then Bournemouth is the perfect location for you, as it's home to Premier League side AFC Bournemouth!



## When the sun sets, Bournemouth continues to thrive!

It has a lively nightlife and good atmosphere, especially during the summer months. Explore the variety of pubs, bars, restaurants, and so much more!

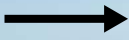
Bournemouth is very diverse, and this is reflected in its wide range of cuisines to choose from, including Italian, Greek, French, Spanish, Portuguese, Pan-Asian, and even Jamaican!

Students have the opportunity to visit Southbourne, Bournemouth, and other local destinations during their stay with us.



*Bournemouth beach*

km



**Home of**



**Tripadvisor  
Travellers'  
Choice Awards  
Best of the Best**



## About our school



Outside front of school

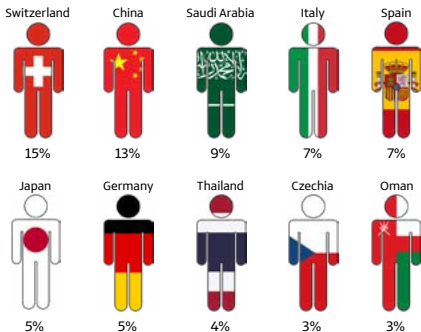
## About our school

Our school was established in 1966, and since then, we have welcomed hundreds of thousands of students from around the world, helping them to develop English for higher education, career, travel, personal growth, or many other reasons.

We have been accredited by the British Council since 1982, a member of Quality English since 2010, and IALC since 2019.

## Top 10 nationalities

based on student weeks by country in 2024



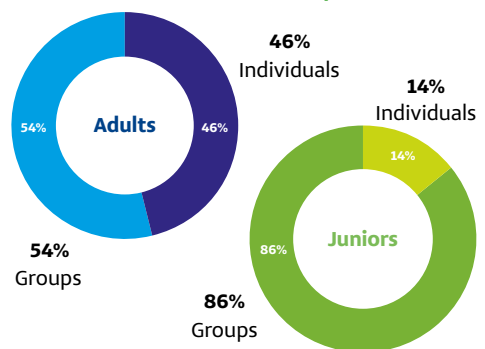
## Students by numbers

based on student weeks in 2024

### Adults vs. Juniors



### Individuals vs. Groups



# Everyone learns better in the right environment

That's why we have all of the following facilities at our school:



22 classrooms fitted with interactive smartboards and air conditioning



A spacious student lounge with table football, table tennis and comfortable sofas



Free Wi-Fi throughout the school and garden during school hours



A large student café which serves fresh hot and cold meals, snacks and drinks



A listening centre, equipped with a wide selection of graded reading material to suit all English levels



Multi-faith prayer room



A pleasant front garden with sunshades and benches

Since 1966, we have continued to improve our school facilities to ensure our students are in the best possible environment for studying, recharging, and practising their English both inside and outside the classroom. Today, we offer well-equipped modern classrooms, a spacious student lounge, a large student cafeteria, a pleasant front garden, a listening centre, a multi-faith prayer room, and free Wi-Fi access throughout the school.



## Our facilities



Student lounge in cafeteria



Scan for more photos of our facilities

## General & Intensive English Courses

Our General and Intensive English courses include lessons that build on the four language skills – writing, reading, speaking, and listening – as well as focus on grammar, pronunciation, and vocabulary.

We welcome students aged 15+ on our adult courses during low season, and age 16+ during the summer courses.

The General English Course has 15 hours of teaching timetabled per week, and the Intensive English Course has an extra 6 hours of negotiated syllabus, totalling 21 hours.

Scan for more information about our adult courses



## Cambridge Examination Courses

You can use your time with us to gain an internationally recognised language qualification. If you plan to enter higher education and widen your career prospects, Cambridge English Examination Courses are very valuable. We can prepare you for the examination you wish to take. We'll help you gain the skills, techniques and confidence to pass.

We have 4-week courses available on set dates every year, with preparation for the B2 First: Cambridge English and C1 Advanced: Cambridge English exams, which can also be booked in the school.

Scan for more information about our Cambridge Examination courses





## One-to-One English Courses



## Adult Group English Courses

You may have specific English needs, for example for your job or to build up confidence when you're speaking. We can help you with this by offering one-to-one lessons with one of our experienced teachers.

In these lessons, you tell us what you would like to learn, and we'll teach you.

We also offer the General and Intensive PLUS courses, these follow our standard General and Intensive English courses with the addition of six hours of one-to-one tuition tailored to your specific needs.

If you would like to study specific topics during the one-to-one private tuition, please let us know in advance.

We offer 5 to 9-night group ministay courses for students aged 15+ during low season, which include either General or Intensive English, local homestay accommodation, and the option to add various afternoon and evening activities, return airport transfers, hot or cold lunches freshly prepared in our cafeteria, as well as full day excursions to a variety of popular destinations!

From mid-June to the end of August, we also run summer group courses for adult students aged 16+. These courses can be for a minimum of one week, and can include either 15 or 21 hours of tuition per week, combined with a varied social programme, local homestay accommodation, and much more!

If you would like to enquire about any of our adult courses please email:

[1966@southbourneschool.co.uk](mailto:1966@southbourneschool.co.uk)



## Summer Individual English Courses

## Junior Group English Courses

We have been taking care of junior individual students and providing English courses since 1966.

Students can book onto our Junior Summer English Course for a minimum of one week from mid-June until the end of August, but many students choose to stay for longer. Students have 15 one-hour lessons each week, from Monday to Friday. Classes are small, averaging 12 students per class (maximum 16). These classes are combined with a fun and varied social programme with students from all over the world.

Scan for more information about our junior courses:



We run closed group ministays from September to mid-June - choose the length of the course, from 5 to 9-nights, then customise with activities, excursions, airport transfers, and more.

Our summer group courses are also available from mid-June to the end of August, students are placed in mixed international classes. These courses can be for a minimum of one week, and we accept students aged 9+ (age 10+ if homestay accommodation is required).

Students enrolled on the summer group courses also have 15 one-hour lessons each week, from Monday to Friday. These lessons are combined with a fun and varied social programme - including sports activities, like beach volleyball and football!

If you would like to enquire about our junior courses please email:  
[1966@southbourneschool.co.uk](mailto:1966@southbourneschool.co.uk)



Students playing table football



Junior students in class



Young junior in class



Student using interactive smartboard



Trip to Corfe Castle, Corfe



Students on Swanage Steam Train



Trip to Bridge of Sighs, Oxford





Horses in New Forest



Lymington High Street



Trip to Brighton



Trip to London



St Catherine's Hill, Christchurch



Trip to Durdle Door



Trip to Lulworth Castle



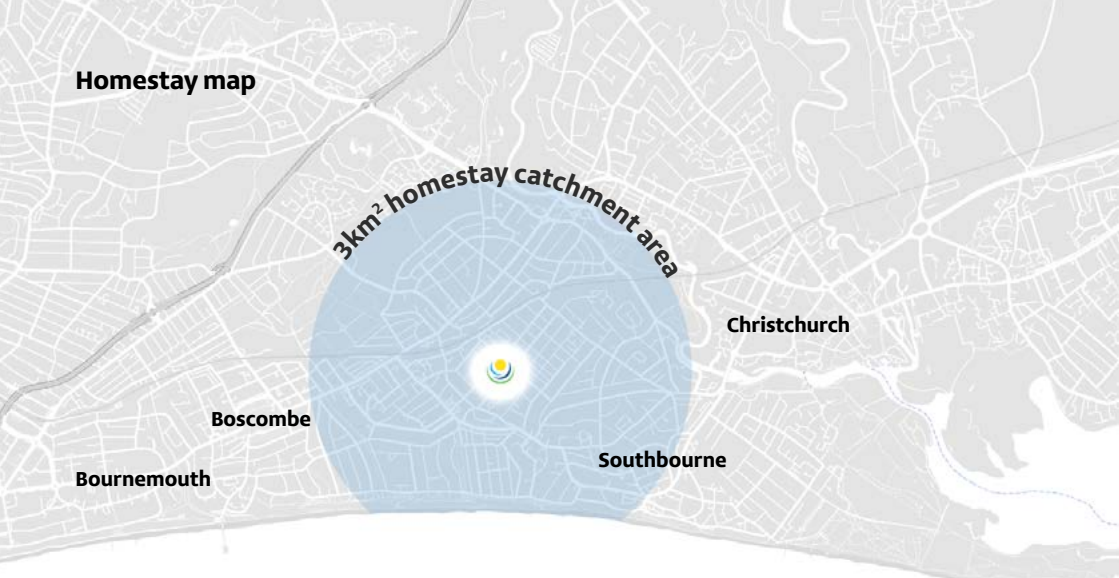
**Adult low season and summer timetable**

Low season	Monday	Tuesday	Wednesday	Thursday	Friday
15 hours (General)	09:15 - 10:15	09:15 - 10:15	09:15 - 10:15	09:15 - 10:15	09:15 - 10:15
	10:30 - 11:30	10:30 - 11:30	10:30 - 11:30	10:30 - 11:30	10:30 - 11:30
	11:45 - 12:45	11:45 - 12:45	11:45 - 12:45	11:45 - 12:45	11:45 - 12:45
21 hours (Intensive)	13:45 - 14:30	13:45 - 14:30	13:45 - 14:30	13:45 - 14:30	Free time
	14:45 - 15:30	14:45 - 15:30	14:45 - 15:30	14:45 - 15:30	
Listening centre	15:45 - 16:30	15:45 - 16:30	15:45 - 16:30	15:45 - 16:30	
Summer season	Monday	Tuesday	Wednesday	Thursday	Friday
15 hours (General)	08:45 - 09:45	08:45 - 09:45	08:45 - 09:45	08:45 - 09:45	08:45 - 09:45
	10:00 - 11:00	10:00 - 11:00	10:00 - 11:00	10:00 - 11:00	10:00 - 11:00
	11:15 - 12:15	11:15 - 12:15	11:15 - 12:15	11:15 - 12:15	11:15 - 12:15
21 hours (Intensive)	12:30 - 13:45	12:30 - 13:45	12:30 - 13:45	12:30 - 13:45	12:30 - 13:30
Activities / Local trips	14:00 - 17:30	14:00 - 17:30	14:00 - 17:30	14:00 - 17:30	14:00 - 17:30
Evening activities	19:30 - 21:30	19:30 - 21:30	19:30 - 21:30	19:30 - 21:30	19:30 - 21:30

**Junior summer timetable**

	Monday	Tuesday	Wednesday	Thursday	Friday
Activities / Local trips	08:45 - 13:00	08:45 - 13:00	08:45 - 13:00	08:45 - 13:00	08:45 - 13:00
15 hours (General)	14:00 - 15:00	14:00 - 15:00	14:00 - 15:00	14:00 - 15:00	14:00 - 15:00
	15:15 - 16:15	15:15 - 16:15	15:15 - 16:15	15:15 - 16:15	15:15 - 16:15
	16:30 - 17:30	16:30 - 17:30	16:30 - 17:30	16:30 - 17:30	16:30 - 17:30
Evening activites	19:30 - 21:30	19:30 - 21:30	19:30 - 21:30	19:30 - 21:30	19:30 - 21:30

## Homestay map

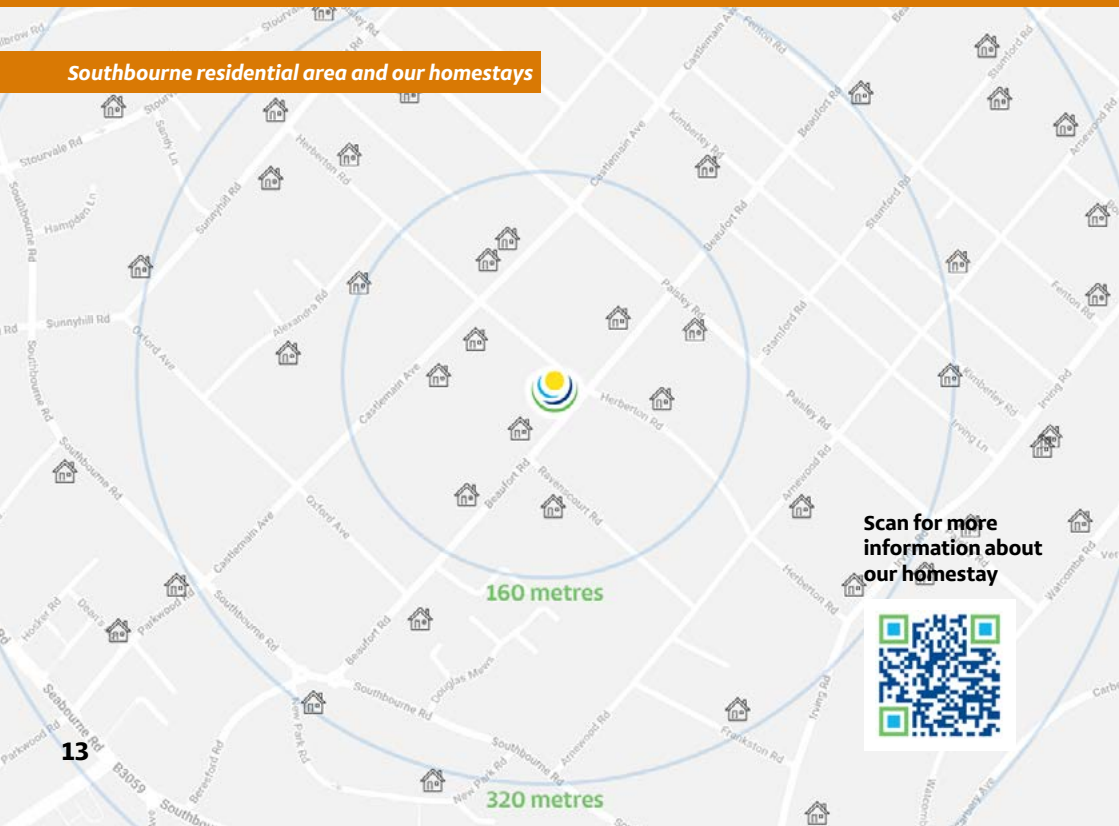


 **45**  
homestays  
within 0.5km  
of school

 **225**  
homestays  
within 3km  
of school

 **30**  
minute  
max journey  
to school

### Southbourne residential area and our homestays



Scan for more  
information about  
our homestay





## Accommodation and Welfare

We only select homestay accommodation within walking distance or a quick bus ride from the school, allowing our students to easily attend classes and explore the local area at their leisure.

**Our friendly hosts are handpicked by our dedicated Accommodation Officer to ensure they provide students with a warm, welcoming environment throughout their stay.**

Students can experience British hospitality firsthand as they become part of a local family, immersing them in the language and culture. Students aged 18+ can enjoy the comfort of their own private room all year round. Whether they're here for a short stay or an extended visit, they have their own space to relax and unwind. We understand the importance of dietary preferences, and many of our hosts are happy to accommodate a variety of needs, including coeliac, vegan, and gluten-free diets - these dietary supplements incur an additional fee.

**Staying with a British family provides students with a perfect opportunity to practise English outside of the classroom.**

They can apply what they've learnt in class with meaningful conversations over their evening meals, helping them to learn about British customs and traditions in a natural setting. With homestays located along good bus routes, getting around the town is very easy. Students can explore everything that British culture has to offer, from iconic landmarks to hidden gems, with ease and convenience.

## Travelling to our school



## Travelling to our school

### *National Express coach to Stansted airport*

**Bournemouth is well-connected. Our local airports, Bournemouth International and Southampton International, are within easy reach via coach, train, or private taxi.**

If you can't fly to Bournemouth or Southampton, or if it's more cost-effective, we recommend London Airports Heathrow (LHR) and Gatwick (LGW), as these are the most convenient London airports to travel to and from the school. During our high season courses, we offer a collective taxi transfer to and from Heathrow Airport every Sunday. For more information, including the latest prices, please view our latest price lists. You can also travel to Luton (LTN) and Stansted (STN) airport, but these are a bit further away.

There are excellent train and coach links between all the airports.

You can book coaches here:  
<https://www.nationalexpress.com/>

You can book trains here:  
<https://www.thetrainline.com/>

If you wish, we can arrange a private taxi transfer from a number of airports. You can select this option when enrolling.



### *Heathrow airport arrivals*

**Map of airports**

Airports and distance from school	
Bournemouth	4.4 miles / 7km
Southampton	32 miles / 51km
London Heathrow	89 miles / 143km
London Gatwick	110 miles / 177km
Luton Airport	122 miles / 196km
London Stansted	152 miles / 244km

**Southbourne School of English**



**Average journey duration by car**

Airport	Average journey duration by car
Heathrow	1 hour 30 minutes
Gatwick	2 hours
Luton	2 hours 10 minutes
Stansted	2 hours 30 minutes



Scan for more information about travelling to Britain



**Average journey duration by car**

Airport	Average journey duration by car
Bournemouth International	12 minutes
Southampton International	45 minutes

# Timeline of our school

1966

In 1966, the school is founded by Paul's grandfather, Peter Jennings.

1974

In 1974, Paul's father, Italo Gallina joins the school

1975

In 1975, Sally Kanan joins the school

In 1982, Southbourne School of English proudly becomes accredited by the British Council

Accredited by the  
 **BRITISH COUNCIL**  
 for the teaching of English in the UK

1982



In 1995, Paul Gallina joins the school and begins promoting the school abroad with his father, Italo.

1995



2001



2009



In 2009, the school updated its logo, inspired by the seaside location

2010

2010



In 2010, the school becomes a member of Quality English

2011

In 2011, the cafeteria extension is built, with seating and tables for 50 students!



2014

In 2014, a roof extension with 2 new classrooms is constructed



2019



In 2019, the school becomes a member of International Associations of Language Centres (IALC)

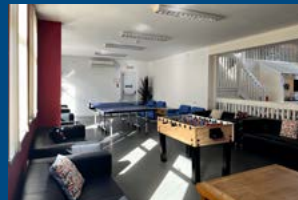
International Association of Language Centres

2020

School is forced to temporarily close due to COVID-19 pandemic

2021

In 2021, the school re-opens its doors with a newly refurbished student lounge



2024

Japanese group outside school side entrance, 2001

Paul Gallina

Italo Gallina

6 401

Students outside school, 1980's



Adult students in class, 1970's



Students in cafeteria, 1970's



Students sat outside school, 1980's



Italo and Gail at study fair, 1970's



Italo and Gail in school, 1990's



Teacher writing on whiteboard, 1970's



# How to book your course



## Choose a suitable course

Every student's level of English is different, so we take great care to match your course to your language ability and needs.



## Complete our enrolment form

You can complete our latest enrolment form on our website and then send it to: [registrar@southbourneschool.co.uk](mailto:registrar@southbourneschool.co.uk)



## Pay the £120 registration fee

Your place at the school will be confirmed once we have received the above-mentioned payment. All fees must be paid at least 4 weeks before the start of the course.



## Read our Terms & Conditions

Please read our Terms & Conditions carefully and confirm that you have understood them before you book and pay for your course.

## Contact us



[1966@southbourneschool.co.uk](mailto:1966@southbourneschool.co.uk)



+44 (0) 1202 422 300



Southbourne School of English  
30 Beaufort Road  
Southbourne, Bournemouth,  
Dorset, BH6 5AL

Scan to view our latest course dates, fees, and enrolment forms



@SouthbourneSchoolofEnglish



/SouthbourneSchool



/@southbourne

Our school

Accredited by the



for the teaching of English in the UK



International Association of Language Centres

